

A

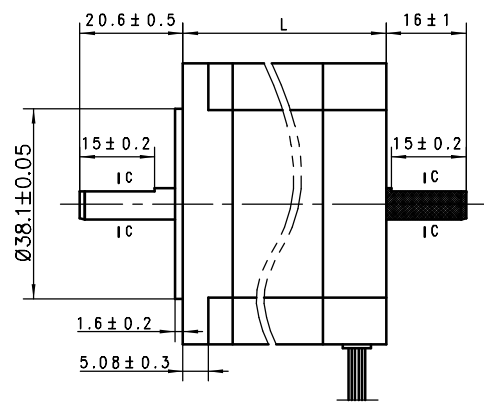
B

C

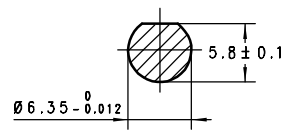
D

E

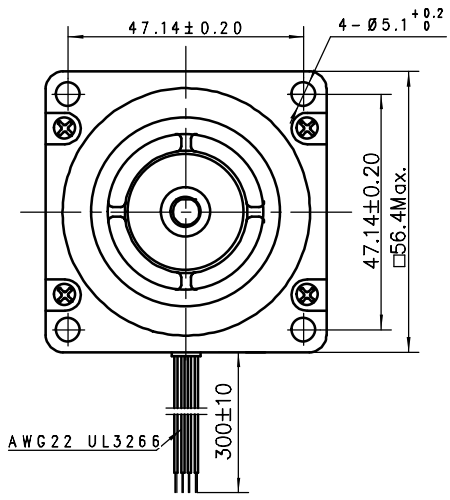
F



C - C (2:1)



■此外形图为双轴产品。单轴产品无 ( ■ ) 部分的转轴



型号	长度 (L)
AM23HS04A0-01	39
AM23HS04A0-02	39
AM23HS84A0-01	55
AM23HS84A0-02	55
AM23HSA4A0-01	77
AM23HSA4A0-02	77
AM23HS04B0-01	39
AM23HS04B0-02	39
AM23HS84B0-01	55
AM23HS84B0-02	55
AM23HSA4B0-01	77
AM23HSA4B0-02	77

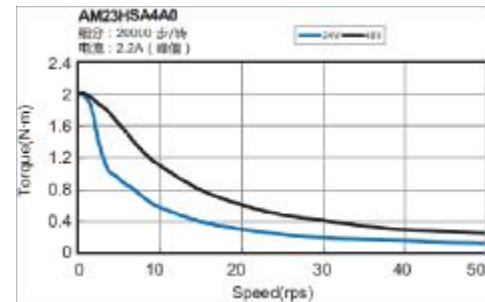
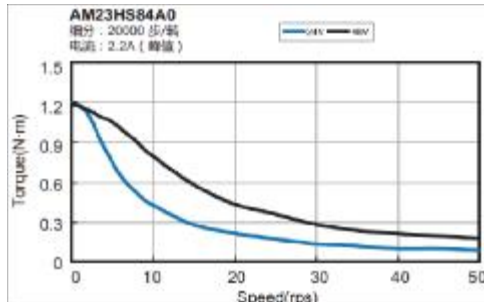
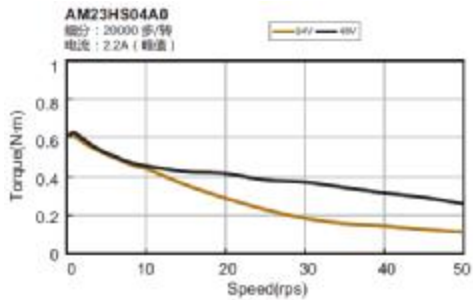
Unit: mm  
 第一角画法  
 FIRST ANGLE METHOD  
 未注线性与角度尺寸公差  
 Tolerances for linear and angular dimensions without individual tolerance indications  
 GB/T 1804-m eqv ISO 2768-1:m  
 未注形状与位置尺寸公差  
 Geometrical tolerance for features without individual tolerance indications  
 GB/T 1184-K eqv ISO 2768-2:K

批准 Approve  
 标准化 Standard  
 工艺 Technology  
 审核 Check  
 设计 Design

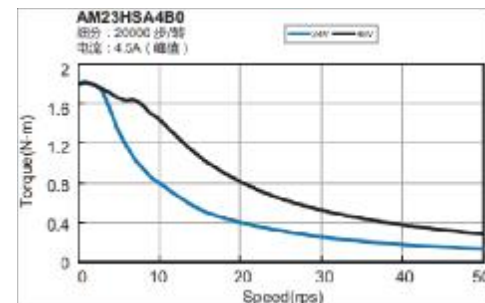
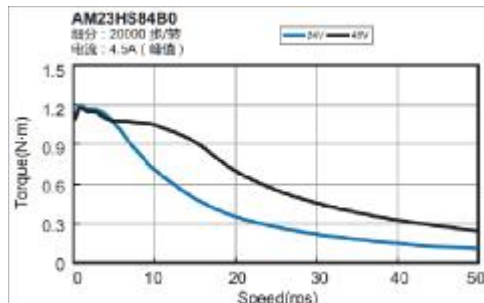
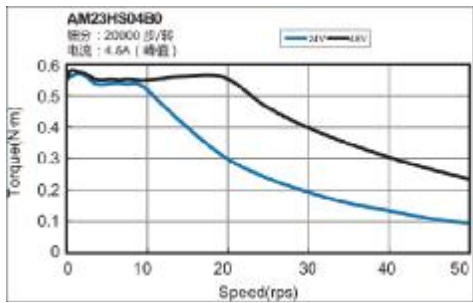
**MOONS'** Hybrid Stepping Motor  
 SHANGHAI AMP & MOONS' AUTOMATION CO.,LTD  
 This document is released for information only. Its reproduction in whole or in part or its dissemination to third parties is prohibited. All trademarks and registered trademarks appearing on this document are the property of their respective owners.

REV.	版本记录 REVISION RECORD	DATE	UNLESS OTHERWISE SPECIFIED	NAMES	SIGNATURE	DATE	SCALE 1:1	Sheet 1 of 1
1	原始版本 Original revision							

A

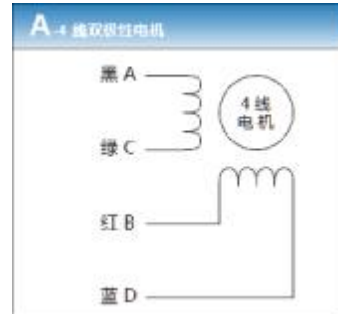


B



C

匹配驱动	产品系列	产品名称		步距角 (°)	安装尺寸 (mm)	长度	静力矩 (N·m)	电流 (A)	转子惯量 (g·cm <sup>2</sup> )	重量 (Kg)	出线数	出轴形式					
		系列代号	产品型号														
SR/ST	NEMA23	AM23HS	AM23HS04A0-01	1.8	56	39	0.82	2.2	120	0.4	4	单出轴					
			AM23HS04A0-02									双出轴					
			AM23HS84A0-01									55	1.5	220	0.6	4	单出轴
			AM23HS84A0-02														双出轴
			AM23HSA4A0-01			77	2.3	390	1	4	单出轴						
			AM23HSA4A0-02								双出轴						
			AM23HS04B0-01			39	0.82	120	0.4	4	单出轴						
			AM23HS04B0-02								双出轴						
			AM23HS84B0-01								55	1.5	220	0.6	4	单出轴	
			AM23HS84B0-02													双出轴	
			AM23HSA4B0-01			77	2.3	390	1	4	单出轴						
			AM23HSA4B0-02								双出轴						

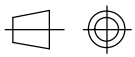


D

E

F

Unit: mm  
**第一角画法**  
 FIRST ANGLE METHOD  
 未注线性与角度尺寸公差  
 Tolerances for linear and angular dimensions without individual tolerance indications  
 GB/T 1804-m eqv ISO 2768-1:m  
 未注形状与位置尺寸公差  
 Geometrical tolerance for features without individual tolerance indications  
 GB/T 1184-K eqv ISO 2768-2:K

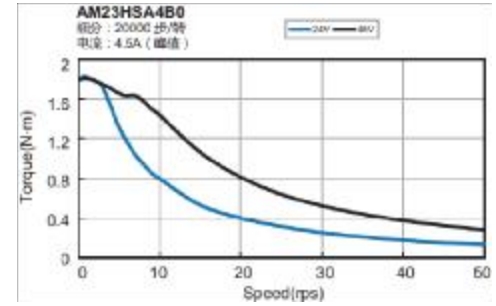
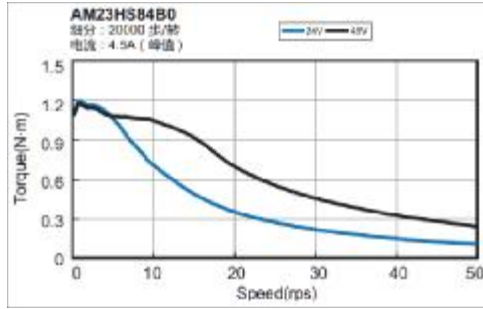
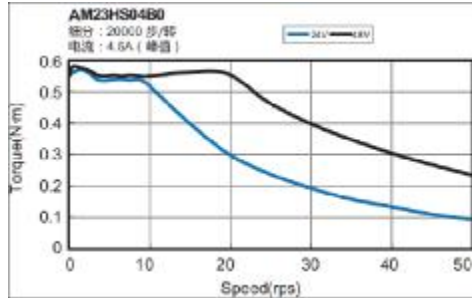


批准 Approve  
 标准化 Standard  
 工艺 Technology  
 审核 Check  
 设计 Design

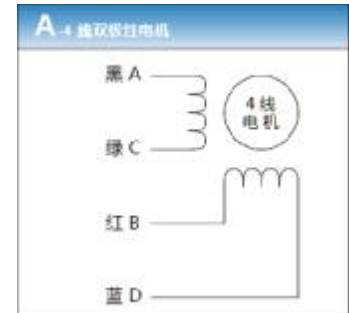
**MOONS'** Hybrid Stepping Motor  
 SHANGHAI AMP & MOONS' AUTOMATION CO.,LTD  
 This document is released for information only. Its reproduction in whole or in part or its dissemination to third parties is prohibited. All trademarks and registered trademarks appearing on this document are the property of their respective owners.

REV.	版本记录 REVISION RECORD	DATE	UNLESS OTHERWISE SPECIFIED	NAMES	SIGNATURE	DATE	SCALE 1:1	Sheet 1 of
------	----------------------	------	----------------------------	-------	-----------	------	-----------	------------





匹配驱动	产品系列	产品名称		步距角 (°)	安装尺寸 (mm)	长度	静力矩 (N.m)	电流 (A)	转子惯量 (g.cm <sup>2</sup> )	重量 (Kg)	出线数	出轴形式
		系列代号	产品型号									
SR/ST	NEMA23	AM23HS	AM23HS04B0-03	1.8	56	39	0.82	4.5	120	0.4	4	单出轴
			AM23HS04B0-04									双出轴
			AM23HS84B0-03			55	1.5		220	0.6	4	单出轴
			AM23HS84B0-04									双出轴
			AM23HSA4B0-03			77	2.3		390	1	4	单出轴
			AM23HSA4B0-04									双出轴



		Unit: mm 第一角画法 FIRST ANGLE METHOD 未注线性与角度尺寸公差 Tolerances for linear and angular dimensions without individual tolerance indications GB/T 1804-m eqv ISO 2768-1:m 未注形状与位置尺寸公差 Geometrical tolerance for features without individual tolerance indications GB/T 1184-K eqv ISO 2768-2:K				批准 Approve		<b>MOONS'</b> Hybrid Stepping Motor SHANGHAI AMP & MOONS' AUTOMATION CO.,LTD This document is released for information only. Its reproduction in whole or in part or its dissemination to third parties is prohibited. All trademarks and registered trademarks appearing on this document are the property of their respective owners.
				标准化 Standard				
				工艺 Technology				
				审核 Check				
REV.	版本记录 REVISION RECORD	DATE	UNLESS OTHERWISE SPECIFIED	NAMES	SIGNATURE	DATE	SCALE 1:1 Sheet 1 of 1	