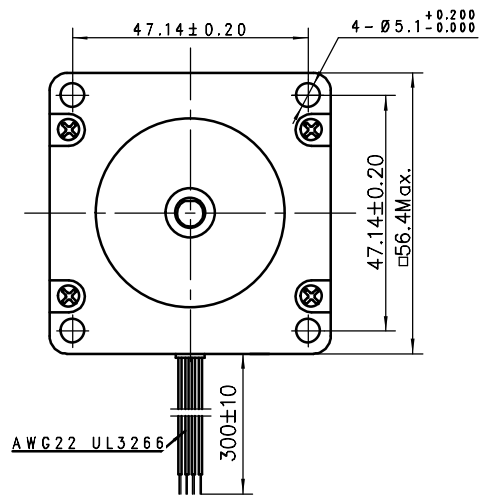
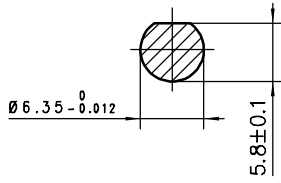



C-C(2:1)



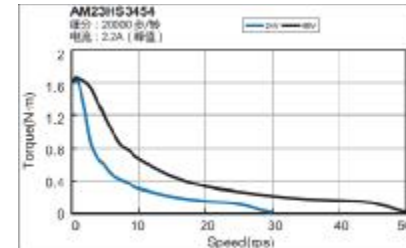
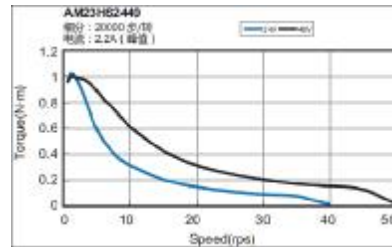
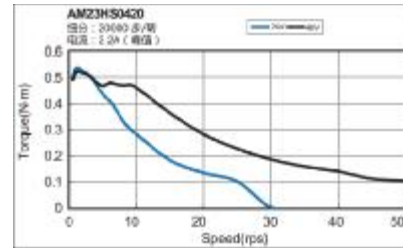
■此外形图为双轴产品。单轴产品无（ ■ ）部分的转轴

型号	长度 (L)
AM23HS0420-01	41
AM23HS0420-02	41
AM23HS2449-01	54
AM23HS2449-02	54
AM23HS3454-01	76
AM23HS3454-02	76
AM23HS0421-01	41
AM23HS0421-02	41
AM23HS2450-01	54
AM23HS2450-02	54
AM23HS3455-01	76
AM23HS3455-02	76

			Unit: mm 第一角画法 FIRST ANGLE METHOD  未注线性与角度尺寸公差 Tolerances for linear and angular dimensions without individual tolerance indications GB/T 1804-m eqv ISO 2768-1:m 未注形状与位置尺寸公差 Geometrical tolerance for features without individual tolerance indications GB/T 1184-K eqv ISO 2768-2:K	批准 Approve		<div>MOONS'</div> <div>SHANGHAI AMP & MOONS' AUTOMATION CO.,LTD</div> <div>This document is released for information only. Its reproduction in whole or in part or its dissemination to third parties is prohibited. All trademarks and registered trademarks appearing on this document are the property of their respective owners.</div>	Hybrid Stepping Motor	
				标准化 Standard				
				工艺 Technology				
				审核 Check				
				设计 Design				
原	始	版	本	Original	revision			
REV.	版本记录 REVISION RECORD		DATE	UNLESS OTHERWISE SPECIFIED	NAMES	SIGNATURE	DATE	SCALE 1:1 Sheet 1 of 1

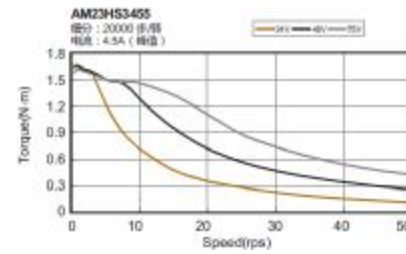
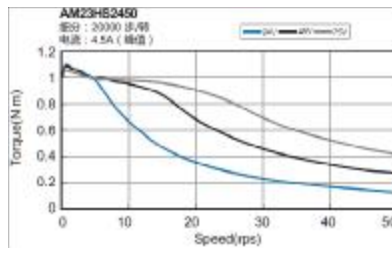
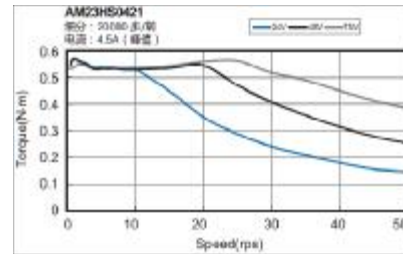
1 2 3 4 5 6 7 8

A



A

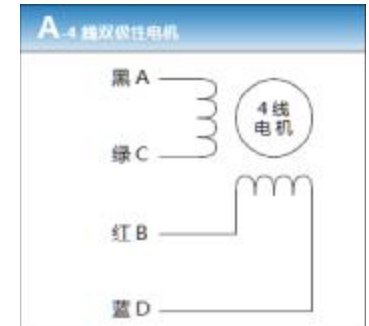
B



B

C

匹配驱动	产品系列	产品名称		步距角（°）	安装尺寸 (mm)	长度	静力矩 (N.m)	电流 (A)	转子惯量 (g.cm ²)	重量 (Kg)	出线数	出轴形式
		系列代号	产品型号									
SR/ST	NEMA23	AM23HS	AM23HS0420-01	1.8	56	41	0.6	2.2	135	0.42	4	单出轴
			AM23HS0420-02									双出轴
			AM23HS2449-01			54	1.2		260	0.6	4	单出轴
			AM23HS2449-02									双出轴
			AM23HS3454-01			76	1.8	460	1	4	单出轴	
			AM23HS3454-02								双出轴	
			AM23HS0421-01			41	0.6	4.5	135	0.42	4	单出轴
			AM23HS0421-02									双出轴
			AM23HS2450-01			54	1.2		260	0.6	4	单出轴
			AM23HS2450-02									双出轴
			AM23HS3455-01			76	1.8		460	1	4	单出轴
			AM23HS3455-02									双出轴
			AM23HS5412-01			111	3.2		750	1.5	4	单出轴
			AM23HS5412-02									双出轴



C

D

D

E

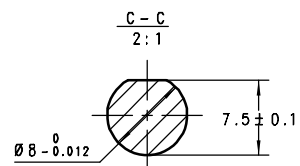
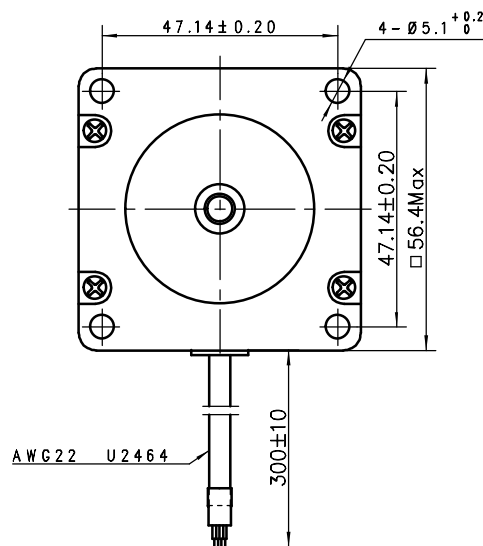
E



F

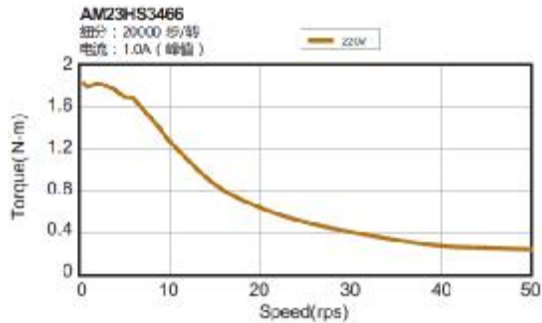
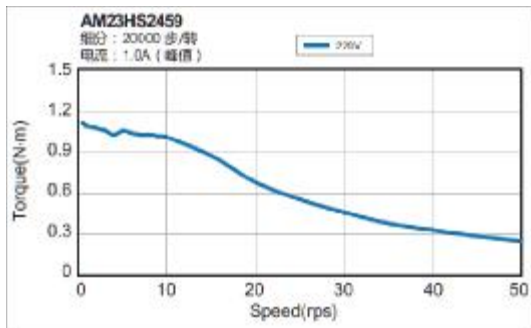
F

			Unit: mm 第一角画法 FIRST ANGLE METHOD 	批准 Approve			<div>MOONS'</div> <div>Hybrid Stepping Motor</div> <div>SHANGHAI AMP & MOONS' AUTOMATION CO.,LTD</div> <div>This document is released for information only. Its reproduction in whole or in part or its dissemination to third parties is prohibited. All trademarks and registered trademarks appearing on this document are the property of their respective owners.</div>	
			未注线性与角度尺寸公差 Tolerances for linear and angular dimensions without individual tolerance indications GB/T 1804-m eqv ISO 2768-1:m	标准化 Standard				
			未注形状与位置尺寸公差 Geometrical tolerance for features without individual tolerance indications GB/T 1184-K eqv ISO 2768-2:K	工艺 Technology				
				审核 Check				
	原始版本 Original revision			设计 Design				
REV.	版本记录 REVISION RECORD	DATE	UNLESS OTHERWISE SPECIFIED	NAMES	SIGNATURE	DATE	SCALE 1:1	Sheet 1 of 1

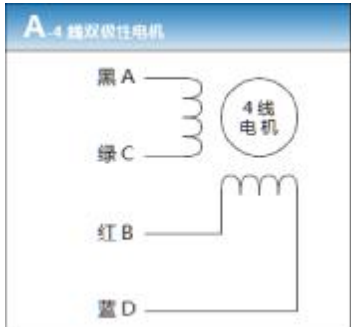
1 2 3 4 5 6 7 8

[illegible]

			Unit: mm 第一角画法 FIRST ANGLE METHOD 	批准 Approve		 Hybrid Stepping Motor SHANGHAI AMP & MOONS' AUTOMATION CO.,LTD This document is released for information only. Its reproduction in whole or in part or its dissemination to third parties is prohibited. All trademarks and registered trademarks appearing on this document are the property of their respective owners.		
			未注线性与角度尺寸公差 Tolerances for linear and angular dimensions without individual tolerance indications GB/T 1804-m eqv ISO 2768-1:m	标准化 Standard				
			未注形状与位置尺寸公差 Geometrical tolerances for features without individual tolerance indications GB/T 1184-K eqv ISO 2768-2:K	工艺 Technology				
				审核 Check				
				设计 Design				
	原始版本 Original revision							
REV.	版本记录 REVISION RECORD	DATE	UNLESS OTHERWISE SPECIFIED	NAMES	SIGNATURE	DATE		SCALE 1:1 Sheet 1 of 1



匹配驱动	产品系列	产品名称		步距角 (°)	安装尺寸 (mm)	长度	静力矩 (N.m)	电流 (A)	转子惯量 (g.cm ²)	重量 (Kg)	出线数	出轴形式
		系列代号	产品型号									
SRAC/STAC	NEMA23	AM23HS	AM23HS2459-01	1.8	56	54	1.1	1	260	0.6	4	单出轴
			AM23HS3466-01			76	1.8		460	1	4	



F			Unit: mm 第一角画法 FIRST ANGLE METHOD 未注线性与角度尺寸公差 Tolerances for linear and angular dimensions without individual tolerance indications GB/T 1804-m eqv ISO 2768-1:M 未注形状与位置尺寸公差 Geometrical tolerance for features without individual tolerance indications GB/T 1184-K eqv ISO 2768-2:K		批准 Approve			MOONS' SHANGHAI AMP & MOONS' AUTOMATION CO.,LTD		Hybrid Stepping Motor	
					标准化 Standard					This document is released for information only. Its reproduction in whole or in part or its dissemination to third parties is prohibited. All trademarks and registered trademarks appearing on this document are the property of their respective owners.	
					工艺 Technology						
					审核 Check						
					设计 Design						
REV.	版本记录 REVISION RECORD		DATE	UNLESS OTHERWISE SPECIFIED	NAMES	SIGNATURE	DATE			SCALE 1:1	Sheet 1 of 1